

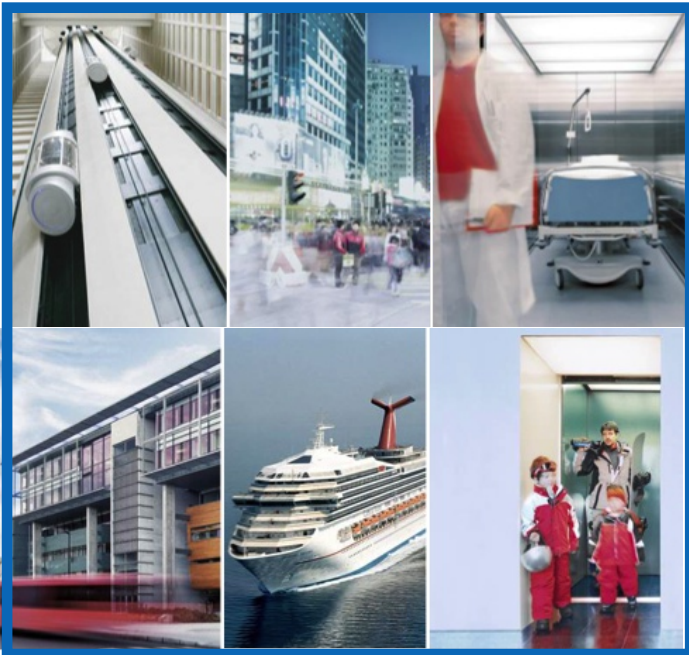
# SE at Schindler

## Challenges of the Elevator Business

*Markus Walker, Elevator Systems Architect at Schindler R&D, CSEP*

## SE in Industrial Application

*Sven-Olaf Schulze, VP Systems Engineer at Suzlon Energy Ltd, President of GfSE*



The first presentation is on the SE activities at Schindler, with a glance into the changes in the recent past and soon future.

Mr. Schulze will then give an overview on SE in industrial application, including outlook to INCOSE and GfSE.

The event ends with the General Assembly of INCOSE Switzerland / SSSE.

Late arrival possible: 16.00 - 17.00

*To attend please contact until 24.5.2012: Markus Walker  
Email: [markus.walker@incose.org](mailto:markus.walker@incose.org) - [www.ssse.ch](http://www.ssse.ch)*

**Wednesday 30.5.2012 | 14.30 - 19.00**

Schindler Aufzüge AG - Zugerstrasse 13 - 6030 Ebikon